

沧州市永高农牧机械科技有限公司

Cangzhou Yonggao Farming Machinery Technology Co.,Ltd.

ADD: 河北省沧州市运河区北京路渤海海信大厦 901

TEL: 400-685-6858

FAX: 0317-2135837

E-mail: yonggao@51yonggao.com

微信公众平台

抖音官方账号

快手官方账号



WINCORE



永高农牧  
YONGGAO FARMING

专注于猪场智能饲喂系统

SPECIALIZING IN INTELLIGENT FEEDING SYSTEM OF PIG FARM



## 02 企业简介 Enterprise profile

---

## 06 液态智能饲喂系统 Liquid intelligent feeding system

---

## 12 智能精准饲喂系统 Intelligent precision feeding system

---

## 14 自动化喂料系统 Automatic feeding system

---

企业简介  
COMPANY PROFILE

沧州市永高农牧机械科技有限公司始建于1989年，集自动化养殖设备的研发、制造、销售、工程设计、安装及售后服务于一体，专注于猪场智能饲喂系统。

公司拥有独立的进出口经营权，产品出口到东南亚、中东、美洲以及欧洲等20多个国家。

2018年5月11日，公司对经营产品进行了转型，由原来的为客户交钥匙工程模式，转型为专注于研发、深耕料线系统，在智能饲喂系统领域将产品做专、做精、做细。

永高农牧——专注于猪场智能饲喂系统，已成为我们在行业内的立足、发展、贡献之本。

为满足行业市场对产品的不同需求，我们的产品也在进行着快速的更新迭代，2019年下半年，公司已完成自动化喂料系统的PLC智能控制云平台的上线应用，实现了对系统的智能控制使用，有效减少了人工成本，大大降低了猪只饲喂的运营成本，在客户使用过程当中发挥更大价值，为客户创造出了更高的效益！

3000 万元  
注册资金

111 项  
产品专利

5 项  
PCT国际专利

3 项  
计算机软件著作权



Founded in 1989, Cangzhou Yonggao Farming Machinery Technology Co., Ltd is a developer, manufacturer, marketer, construction contractor of hog production equipment, specializing in pig farming Intelligent feeding system.

With a registered capital of 30 million yuan, Yonggao Farming owns 111 product patents, 5 PCT international patents and 3 computer software copyrights, and is a high-tech enterprise and local key leading enterprise in Hebei Province.

The company has independent rights of import and export, and had exported its products to more than 20 countries in Southeast Asia, Middle East, America and Europe. On May 11, 2018, Yonggao Farming made a major transition of its core business model – from a turnkey construction contractor to a professional pig farm Intelligent feeding system provider. We were dedicated to upgrading and innovating our Intelligent feeding system products.

Specializing in pig farming Intelligent feeding system has become our foothold in the industry that promises the company a sustainable development and growth.

To meet the different needs from different customers on the products, we keep upgrading and improving our products. On the second half of 2019, we had successfully launched the online application of the PLC intelligent control cloud platform, realizing the intelligent control on the automatic feeding system application. The application can help effectively reduce the labor costs and greatly reduce the operation cost of pig feeding, and hence can help create higher values and benefits to our customers!

企业文化  
CORPORATE CULTURE

**企业使命**  
打造国际畜牧业新型生态圈  
个人价值最大化 团队价值最大化 社会价值最大化  
**Corporate mission**  
Create a new ecosphere for international animal husbandry  
Individual value maximization Team value maximization  
Social value maximization

**企业愿景**  
成为员工创业的平台，实现共赢；与合作单位实现命运共同体，实现共享  
持续推动畜牧行业发展前进  
**Corporate vision**  
To be a platform for employees to start their own businesses and achieve win-win situation  
To realize a community with a shared future and share with partners  
Continue to promote the development of animal husbandry industry

**企业价值观**  
客户第一 团队合作 顺势而为 爱岗敬业  
**Corporate values**  
Customers first Team cooperation  
Trend following Devotion passionate in one's job

**企业精神**  
求实 创新 竞争 共享  
**Corporate spirit**  
Factualism Innovation Competition Sharing

**企业道德**  
以德为本 遵规有道  
**Corporate ethics**  
Morality-rooted Comply to rules and principles

**企业作风**  
谦虚 严谨 务实 高效 学习  
**Corporate work style**  
Modest Precise Practical Efficient Learning

发展历程 DEVELOPMENT HISTORY

• **1989**

沧县东方仪表车床加工厂 成立  
Cangxian Oriental Instrument Lathe Processing Factory was established



• **1995**

公司与海尔、荣事达、王牌、威力、小天鹅签署合作协议  
同年进军畜牧行业  
The company signed a cooperation agreement with Haier, Rongshida, Ace, Power, Little Swan, and entered the livestock industry in the same year

• **2000**

沧县永高精密部件厂 成立  
Cangxian Yonggao Precision Parts Factory was established



• **2002**

公司拥有进出口独立经营权  
Obtained independent rights of import and export

• **2008**

沧州市永高农牧机械科技有限公司 正式成立  
Officially use the name Cangzhou Yonggao Farming Machinery Technology Co., Ltd



• **2010**

沧州市永高农牧机械科技有限公司注册资金  
变更为3000万元  
成为国家农业部指定推广鉴定产品  
Upgraded the registered capital of Cangzhou Yonggao to RMB 30 millions, and was designated as identified and approved products by the National Ministry of Agriculture

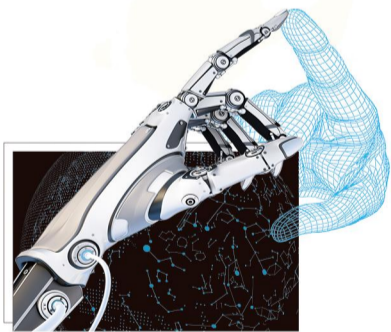


• **2014**

建立全网营销渠道，正式启动电商销售服务平台  
Officially launched the e-commerce sales platform

• **2016**

与阿里巴巴达成合作，成立广州天河区LBS站点  
Reached a cooperation with Alibaba to establish LBS site in Tianhe District, Guangzhou



• **2018**

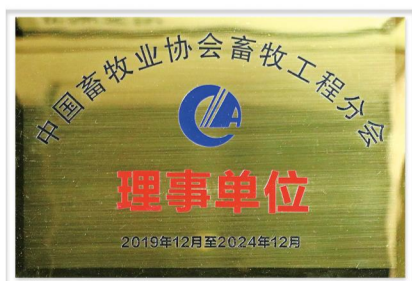
公司转型 专注于猪场自动化饲料系统  
Made a transition to specializing in pig farming feeding system

• **2019**

与京东农牧达成战略合作，共同研发  
智能精准饲喂系统  
Reached strategic cooperation with Jing Dong Farming to jointly develop intelligent and precise feeding system



二十大畜牧行业民族品牌  
Top 20 national brands in animal husbandry industry



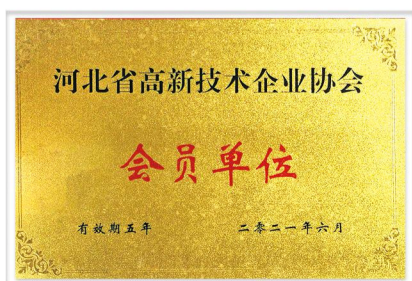
中国畜牧业协会畜牧工程分会理事单位  
CAAA Council Members



中国农牧行业“专精特新”独角兽企业  
A unicorn enterprise of "SNE" in China's agriculture and animal husbandry industry



河北省“专精特新”示范企业  
Demonstration Enterprise of "SNE" in Hebei Province

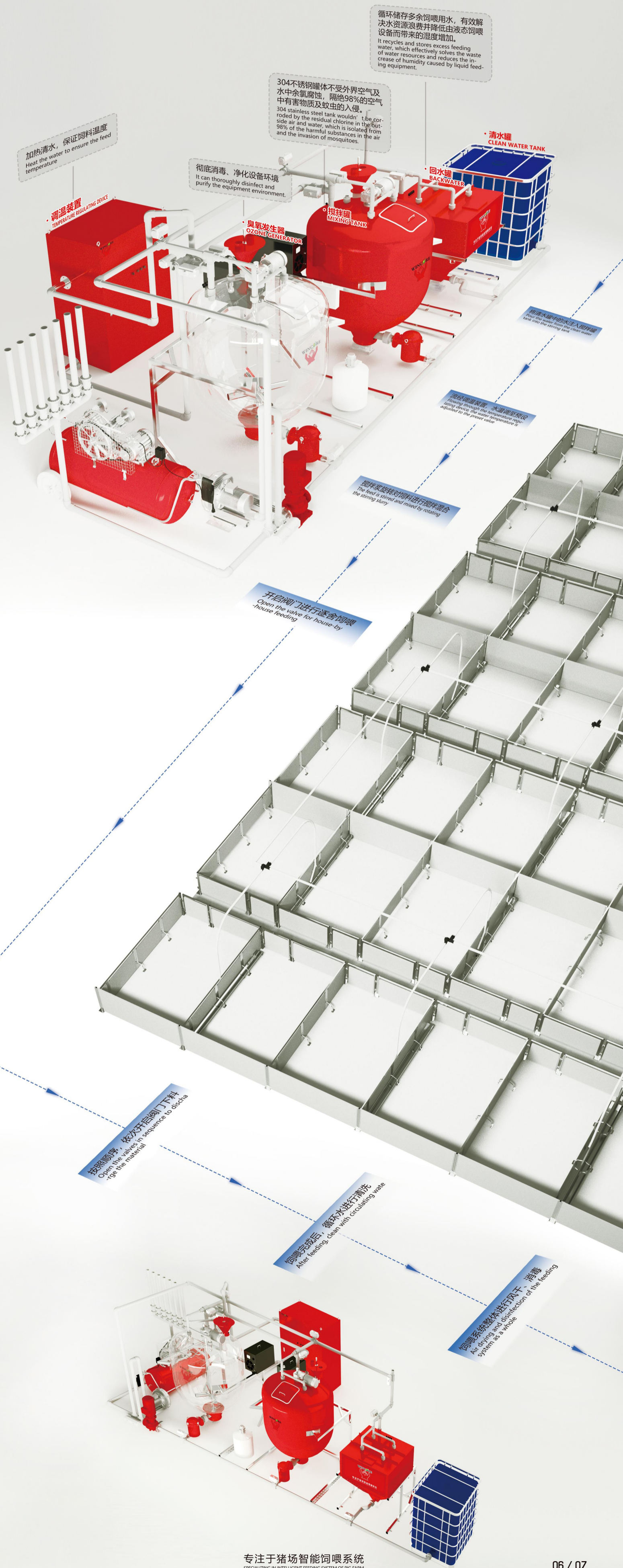


河北省高新技术企业协会会员单位  
Member unit of High Tech Enterprise Association in Hebei Province



市级工业设计中心  
Municipal Industrial Design Center

液态智能饲喂系统  
LIQUID INTELLIGENT FEEDING SYSTEM



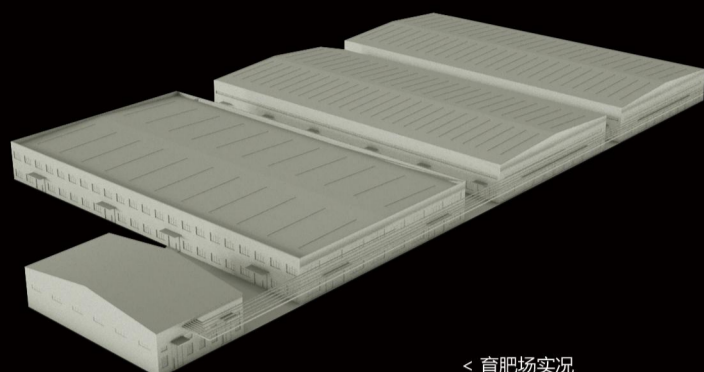


请输入您需要搜索的功能

21023kg 料塔余量

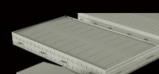
1052kg 储水罐余量

1500kg 搅拌罐余量



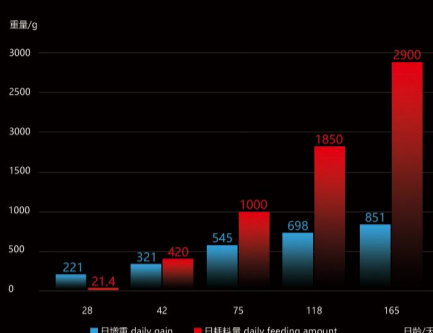
< 育肥场实况

1号舍状态 1# status



饲喂总量: 5664kg 猪只数量: 1920头  
栏位数: 240个 饲料种类: 1号料

饲喂参数图 Feeding parameter chart



温湿度/PH值 Humiture/PH 实时显示搅拌罐内状况

温度 / temperature 21°C | 湿度 / humidness 60% | PH 7

当日饲喂量 Feeding statistics today

饲喂次数 feeding times 2次  
总饲喂量 / feeding amount 1862kg

干料量/用水量 Dry material / water consumption

干料 / dry material 620kg | 用水 / water 1741kg

### 搅拌罐 Mixing tank

设置各搅拌罐的参数组成 Set the parameter composition of each mixing tank

水量 water 240 kg  
干料量 dry material 80 kg  
温度 temperature 35 °C  
PH值 7

### 智能饲喂 Intelligent feeding

导入科学数据 Import scientific data

导入智能饲喂数据表 Import intelligent feeding data sheet

保存 SAVE | 一键启动 START

### 下料 Feeding

实时对各猪舍进行下料操作 Conduct feeding for each pig house in real time

1号舍 | 2号舍 | 3号舍 | 4号舍 | 5号舍 | 6号舍

连续下料 continuous feeding OFF ON  
下料口1 feed opening1 OFF ON  
下料口2 feed opening2 OFF ON  
下料口3 feed opening3 OFF ON

### 下料量 Scale of feeding

设置各猪舍下料口的单次下料量 Set the single feeding amount of each feeding opening in the pig house

1号舍 | 2号舍 | 3号舍 | 4号舍 | 5号舍 | 6号舍

统一下料量 uniform feeding amount 8 kg  
下料口1 feed opening1 8 kg  
下料口2 feed opening2 7.5 kg  
下料口3 feed opening3 8.5 kg

### 运行 Operation

实时对各搅拌罐进行运行操作 Run each mixing tank in real time

加水 / water | 加料 / fodder  
搅拌 / stir | 清洗 / cleaning  
消毒 / disinfection | 离心泵 / pump  
加药1 / drug1 | 加药2 / drug2  
加药3 / drug3 | 加药4 / drug4

### 饲喂数据 Feeding data

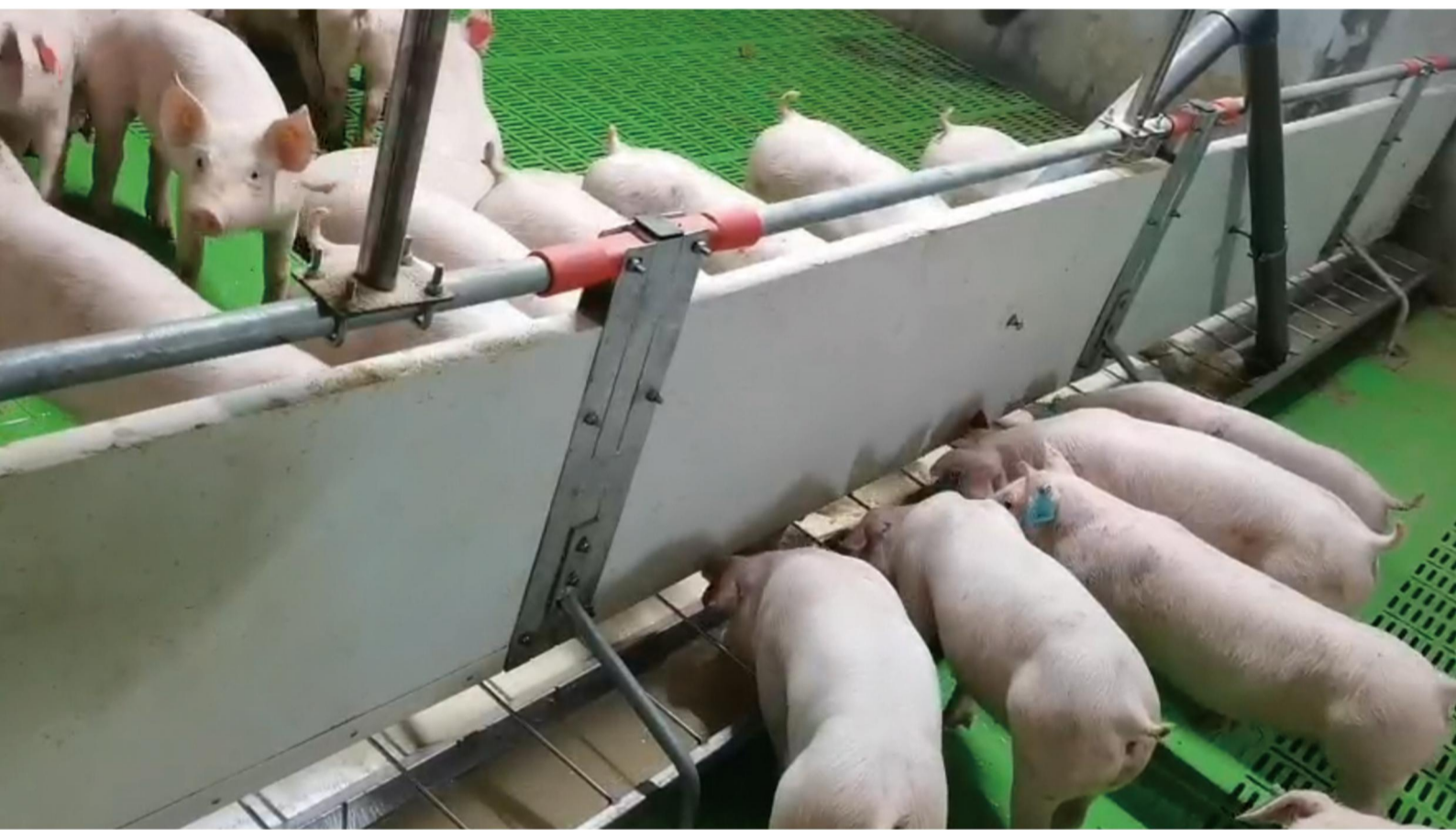
记录统计猪舍饲喂数据 Record and count the feeding data of pig house

1号舍

工程案例 PROJECT CASE



工程案例  
PROJECT CASE



## 智能精准饲喂系统 INTELLIGENT PRECISION FEEDING SYSTEM

**提升采食量，加快生长速度**  
Increase feed intake and speed up growth

**降低成本，提高饲料利用率**  
Reduce cost and improve feed utilization rate

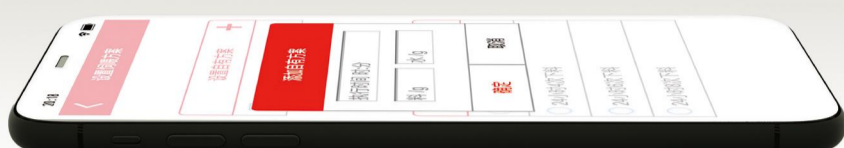
**优化母猪生产力，提高产仔率**  
Optimize the production capacity of sows and improve the litter rate



**远程监控，扁平化管理**  
Remote monitoring and flat management

**提高生物安全，预防猪只呼吸道疾病**  
Improve biosafety and prevent respiratory diseases in pigs

**制定专属饲喂曲线，输出饲喂标准**  
Make exclusive feeding curve and output feeding standard



### APP/PC端 APP/PC

远程管理、监控，实现无接触饲喂  
Remote management and monitoring help realize contactless feeding

### 定时饲喂 timing of feeding

自主设置4个时刻或时间段进行自动下料  
Set 4 automatic moments or time periods for automatic cutting

### 下料量设定 feed quantity setting

单次最小下料量为77g，节约饲料成本  
The minimum feeding amount per time is 77g, which is accurately controlled to save feed cost

### 下水量设定 water quantity setting

手动进行下水，减少猪舍饲料粉尘  
manual launching to reduce feed dust in pig house

### 湿拌功能 wet mix function

自动进行下水功能，实现水料混合、干料清洗  
Automatic water offering function helps realize water and feed mixing as well as dry material cleaning

### 报警功能 alarm function

堵料、水流报警，及早掌握猪只动态  
There are blocking and water flow alarms, which help grasp the dynamics of pigs as soon as possible

#### 企业大数据

#### 系统管理

#### 运维管理

#### 智能饲喂

#### 日志管理

#### 日志管理



### 工程师模式 engineer mode

不同规模猪场统一管理规范，建立科学化饲喂方式  
Implement unified management standards of pig farms of different scales and establish scientific feeding methods

### 管理员模式 administrator mode

标准化执行下发的饲喂规则，减少人员操作随意性  
The feeding rules are carried out in a standard way, which reduces the casualness of the personnel's operation

### 下料量数据 feed quantity data

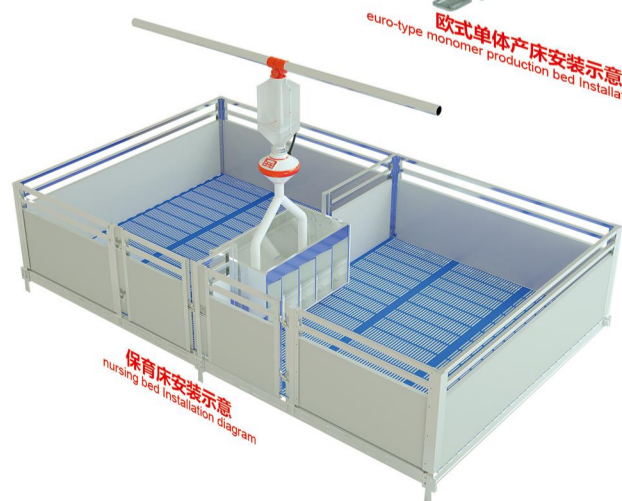
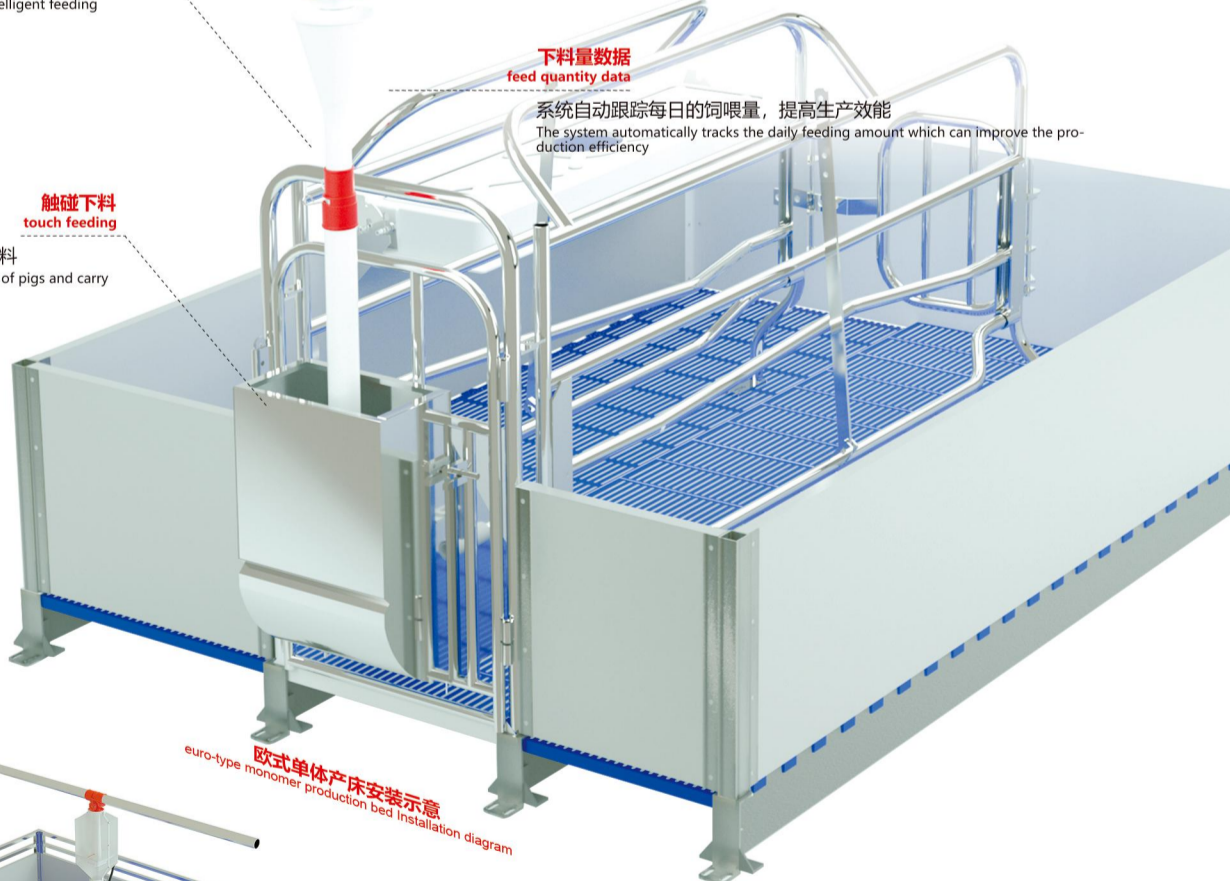
系统自动跟踪每日的饲喂量，提高生产效能  
The system automatically tracks the daily feeding amount which can improve the production efficiency

### 大数据指导 big data guidance

以每头猪的维度分析猪只生产状况，为智能饲喂赋值  
Analyze the production condition of pigs with the dimension of each pig itself, which adds value to intelligent feeding

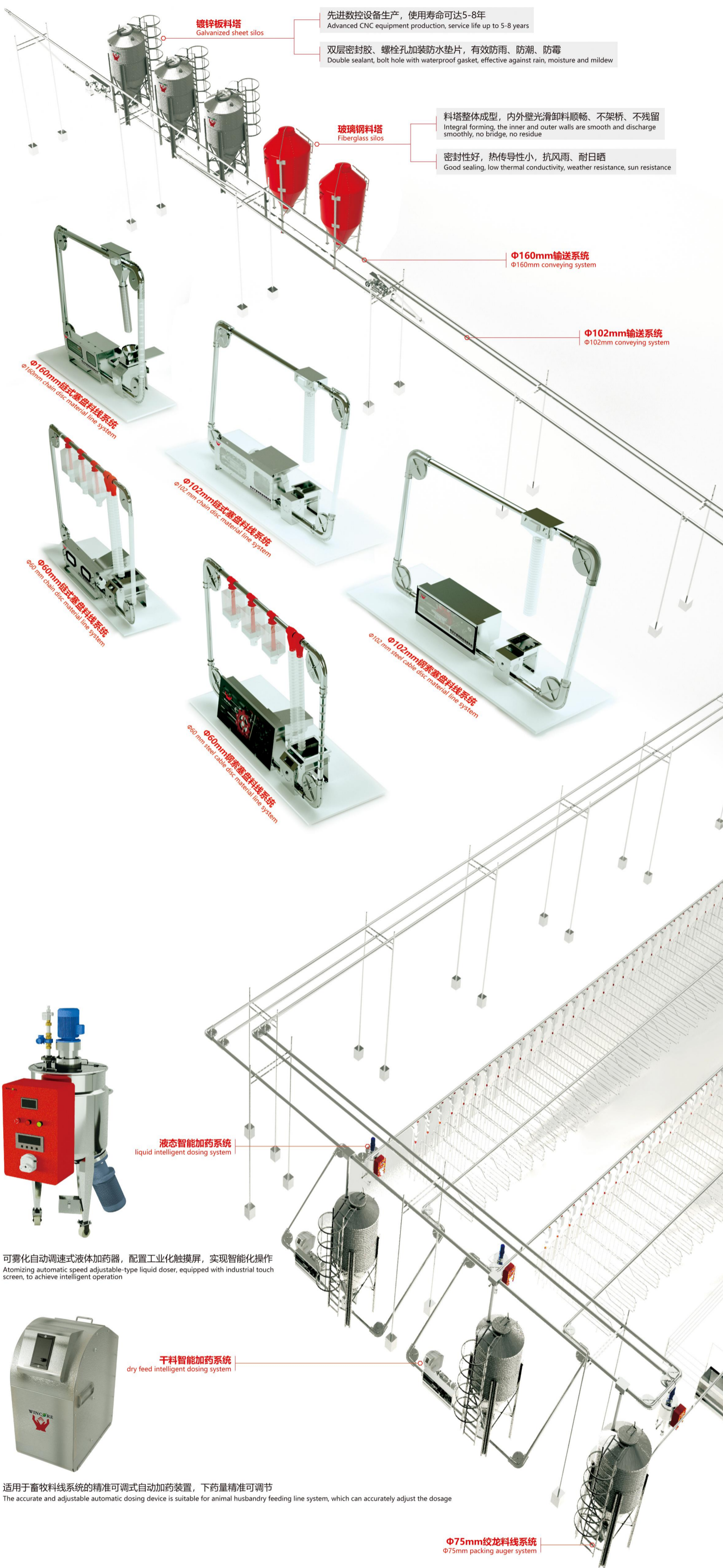
### 触碰下料 touch feeding

智能判定猪只触碰行为，进行下料  
Intelligently judge the touching behavior of pigs and carry out feeding





## 自动化喂料系统 AUTOMATIC FEEDING SYSTEM



先进数控设备生产，使用寿命可达5-8年  
Advanced CNC equipment production, service life up to 5-8 years

双层密封胶、螺栓孔加装防水垫片，有效防雨、防潮、防霉  
Double sealant, bolt hole with waterproof gasket, effective against rain, moisture and mildew

料塔整体成型，内外壁光滑卸料顺畅、不架桥、不残留  
Integral forming, the inner and outer walls are smooth and discharge smoothly, no bridge, no residue

密封性好，热传导性小，抗风雨、耐日晒  
Good sealing, low thermal conductivity, weather resistance, sun resistance

Φ160mm输送系统  
Φ160mm conveying system

Φ102mm输送系统  
Φ102mm conveying system

Φ160mm链式盘式喂料线系统  
Φ160mm chain disc material line system

Φ102mm链式盘式喂料线系统  
Φ102mm chain disc material line system

Φ60mm链式盘式喂料线系统  
Φ60mm chain disc material line system

Φ60mm钢索盘式喂料线系统  
Φ60mm steel cable disc material line system

Φ102mm钢索盘式喂料线系统  
Φ102mm steel cable disc material line system



液态智能加药系统  
liquid intelligent dosing system

可雾化自动调速式液体加药器，配置工业化触摸屏，实现智能化操作  
Atomizing automatic speed adjustable-type liquid doser, equipped with industrial touch screen, to achieve intelligent operation

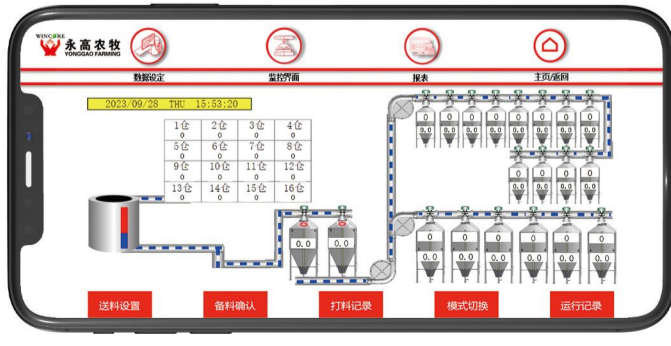


干料智能加药系统  
dry feed intelligent dosing system

适用于畜牧料线系统的精准可调式自动加药装置，下药量精准可调节  
The accurate and adjustable automatic dosing device is suitable for animal husbandry feeding line system, which can accurately adjust the dosage

Φ75mm绞龙料线系统  
Φ75mm packing auger system

### PLC智能控制系统 PLC intelligent control system



支持多平台终端远程监控项目，随时随地轻松查看和控制  
Support multi-platform terminal remote monitoring projects, easy access and control anytime, anywhere

128-BIT SSL加密机制，A/BKEY保护机制  
128-BIT SSL encryption mechanism, A/BKEY protection mechanism

手机APP实时推送报警信息，突发情况及时处理  
The mobile APP pushes the alarm information in real time, handle emergencies in a timely manner

支持26种语言自动翻译，轻松实现多语言工程  
Support 26 languages automatic translation, easy implementation of multilingual engineering

**存栏规模：3000GP/10000PS**  
STOCK AMOUNT



地理区域：华中地区  
geographical area: central China  
楼层数量：15层  
number of floors: 15 layer  
年出栏量：30万头  
annual output: 300,000 heads  
高层养殖  
feeding line for high building  
Φ60mm室内输送系统  
Φ60mm indoor conveying system  
电气控制系统  
electrical control system

**存栏规模：12000PS**  
STOCK AMOUNT



地理区域：华南地区  
geographical area: south China  
楼层数量：17层  
number of floors: 17 layer  
年出栏量：35万头  
annual output: 350,000 heads  
高层养殖  
feeding line for high building  
Φ60mm室内输送系统  
Φ60mm indoor conveying system  
PLC智能控制系统  
PLC intelligent control system

**存栏规模：3500PS**  
STOCK AMOUNT



地理区域：泰国曼谷  
geographical area: Bangkok, Thailand  
项目占地：120亩  
project area: 120 mu  
年出栏量：9万头  
annual output: 90,000 heads  
Φ60mm室内输送系统  
Φ60mm indoor conveying system  
电气控制系统  
electrical control system

**存栏规模：5000PS**  
STOCK AMOUNT



地理区域：西北地区  
geographical area: northwest China  
项目占地：3800亩  
project area: 3800 mu  
年出栏量：13万头  
annual output: 130,000 heads  
Φ60mm室内输送系统  
Φ60mm indoor conveying system  
电气控制系统  
electrical control system



地理区域: 华南地区  
geographical area: south China  
项目占地: 230亩  
project area: 230 mu  
年出栏量: 25万头  
annual output: 250,000 heads  
Φ60mm室内输送系统  
Φ60mm indoor conveying system  
电气控制系统  
electrical control system



地理区域: 华南地区  
geographical area: south China  
项目占地: 2100亩  
project area: 2100 mu  
年出栏量: 50万头  
annual output: 500,000 heads  
全场供料区  
full farm supply area  
Φ60mm室内输送系统  
Φ60mm indoor conveying system  
PLC智能控制系统  
PLC intelligent control system



地理区域: 华北地区  
geographical area: north China  
项目占地: 1718亩  
project area: 1718 mu  
年出栏量: 50万头  
annual output: 500,000 heads  
Φ102mm集中供料系统  
Φ102mm concentrated feeder system  
Φ60mm室内输送系统  
Φ60mm indoor conveying system  
PLC智能控制系统  
PLC intelligent control system



地理区域: 华北地区  
geographical area: north China  
项目占地: 2417亩  
project area: 2417 mu  
年出栏量: 67万头  
annual output: 670,000 heads  
Φ102mm集中供料系统  
Φ102mm concentrated feeder system  
Φ60mm室内输送系统  
Φ60mm indoor conveying system  
PLC智能控制系统  
PLC intelligent control system





存栏规模: 3000GP/24000PS  
STOCK AMOUNT

